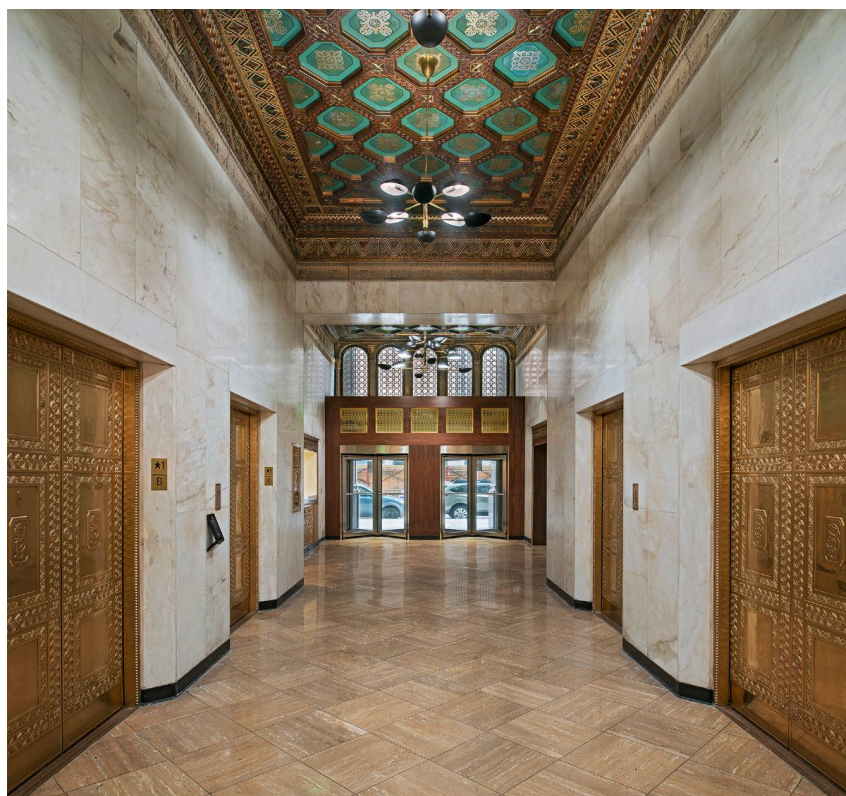
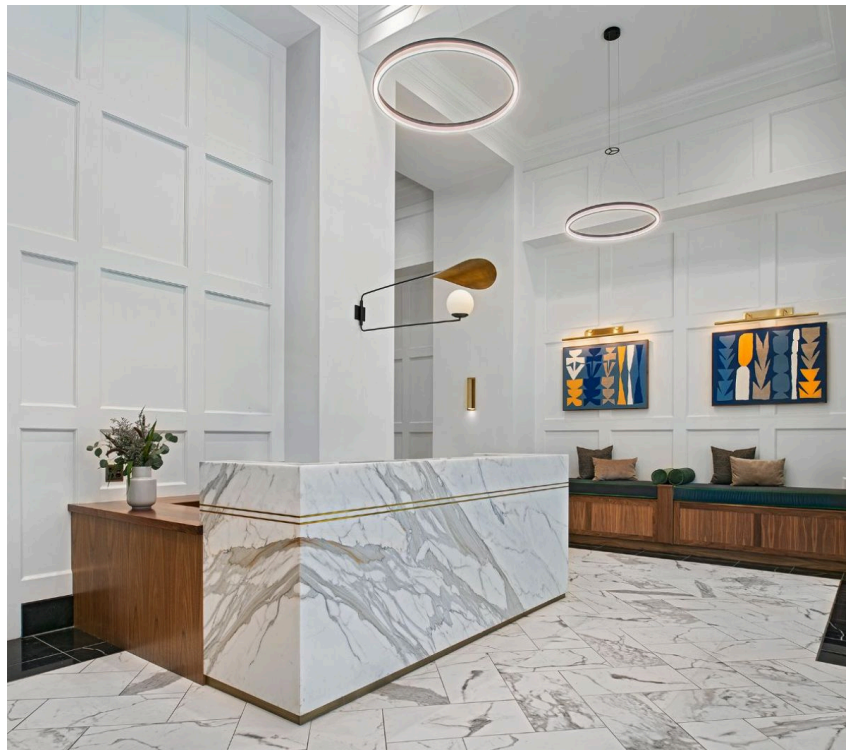


THE DAVID STOTT BUILDING

Detroit, Michigan

Patrick Thompson Design transformed Detroit's historic David Stott Building into a spectacular mixed-use building that includes luxury multi-family housing and space for future commercial offices and retail. Thirty-five floors of this 1929 Art Deco building in Capitol Park have been fully renovated and are now home to some of the most upscale residences and community amenities in the city.

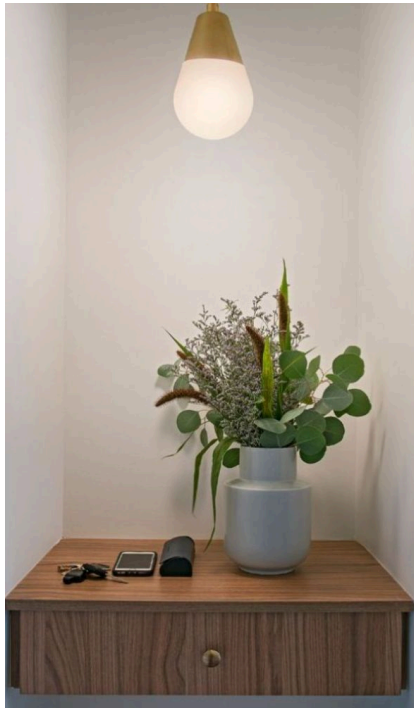






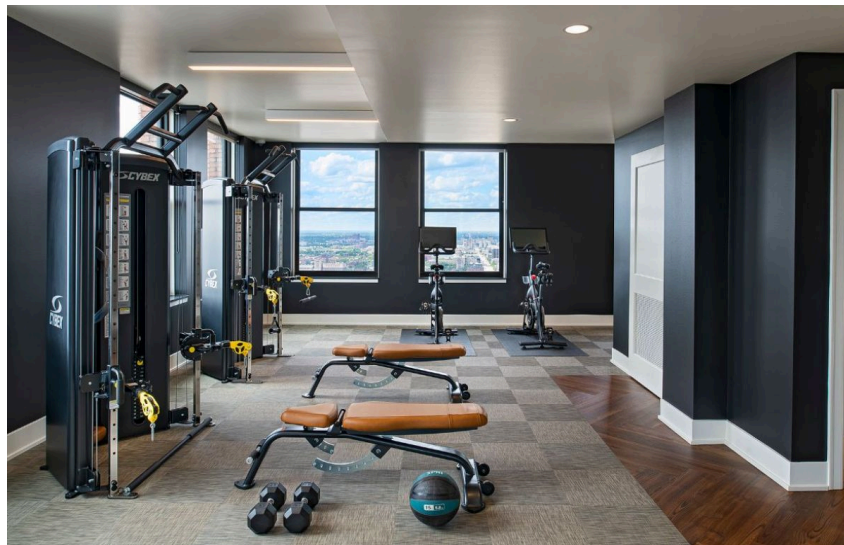
The David Stott includes 107 units with unique layouts that respond to the building's shifting floor plates, ranging from studios to spacious three-bedroom apartments. PTD's primary goal was to create special moments in each unit that allow residents to customize their homes. Entry niches for keys along with open shelving in the kitchen and bathrooms enable residents to style and display their wares, giving a sense of ownership.





PTD's work included world-class amenities such as a thoughtfully designed lounge, community kitchen area, game room and fitness center which all include sweeping views of Detroit, Canada, and the Riverfront.





[Click HERE to see all the photography from this PTD Featured Project.](#)

Learn more about Patrick Thompson Design



Copyright © 2019 Patrick Thompson Design, All rights reserved.

Patrick Thompson Design
2111 Woodward Ave, Suite 1002
Detroit, MI 48201

313-800-4005

Would you like to change how you receive these emails?

You can update your preferences or unsubscribe from this list.