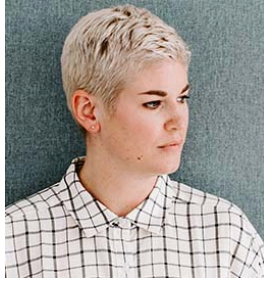


## PTD IN THE NEWS



## CRAIN'S 2020 NOTABLE WOMEN IN DESIGN

PTD's very own Heather McKeon was recently named one of [Crain's 2020 Notable Women in Design](#). As the Director of Operations, she directly manages key projects and provides general guidance across the board on all studio projects. Heather's contributions have resulted in tremendous growth since joining the studio in 2016. She has played a significant role in high profile projects such as the restoration of Detroit's [Metropolitan Building](#) into the Element Hotel and the development of luxury residences at the [David Stott](#).

---

## ON THE BOARDS

### Ann Arbor Mid-Century Renovation



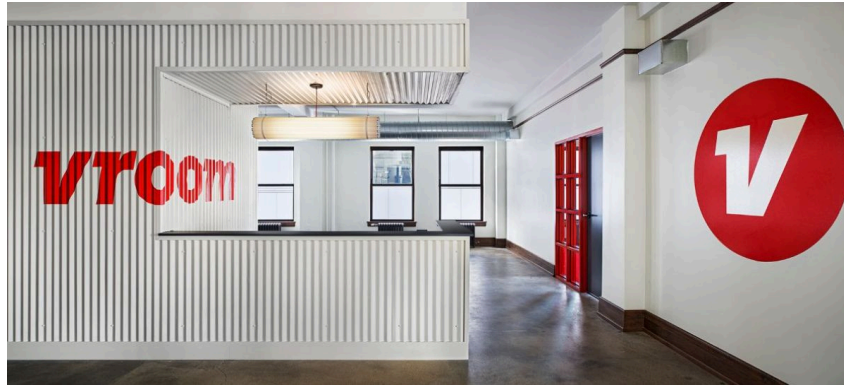
PTD is leading the renovation plans for this expansive mid-century home located on a wooded lot in the heart of Barton Hills in Ann Arbor, Michigan. This 6,600 square foot residence was originally built in 1967 and was designed by renowned architect, David Osler, whose work spans five decades of Michigan's architectural history. Osler's designs are regarded as functional, yet refined, with a minimalist sensibility. PTD's plans for the home will honor the architectural integrity and mid-century style while updating the space for today's modern family.

---

## WORKPLACE DESIGN

[PTD](#) was fortunate to recently design the office environments for a few of our neighbors located in the Palms Building in downtown Detroit.

#### Vroom



[Vroom](#), an automotive tech company, was looking to establish a Detroit office that would blend the classic car culture of the Motor City with its own high tech and glossy aesthetic. Their new office in the Palms Building includes corrugated metal walls that are painted in a sophisticated color palette that elevates the humble material to a show-stopping design element. This central core of the office includes a built-in reception desk, private phone rooms, and cozy niches for employees to slip into for a quiet workspace or phone call. Hand-painted signage, by [Kelly Golden](#), acts as both branding for the company and wayfinding for employees.

#### Zoyes Creative



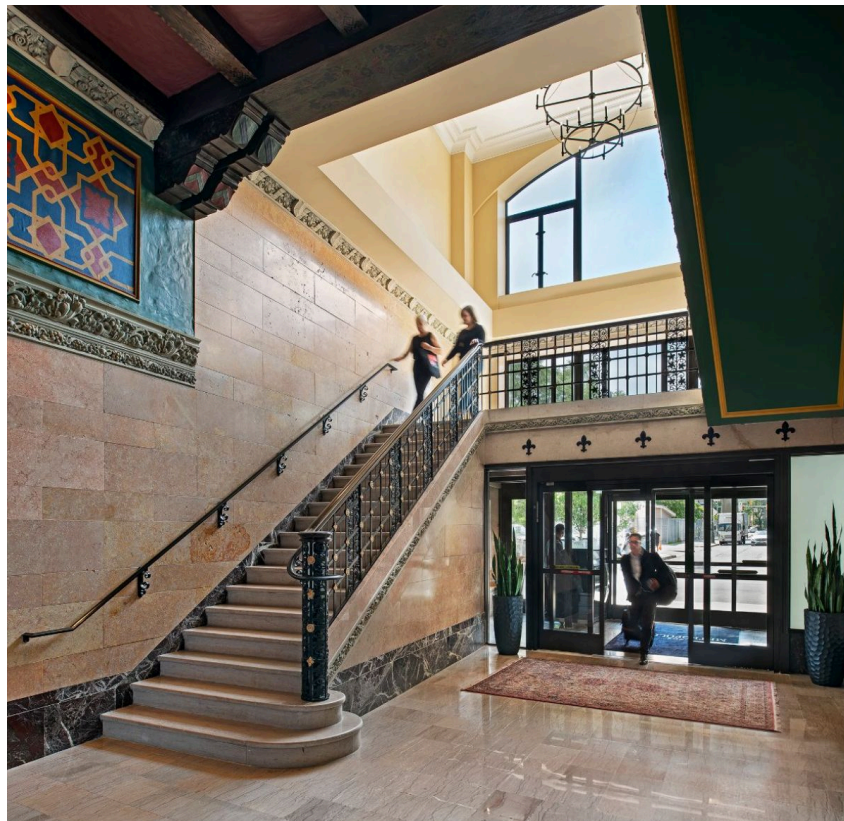
When [Zoyes Creative](#) planned to open a new office in the Palms Building, [PTD](#) was honored to handle the interior design and already had a strong familiarity with the inner-workings of this successful agency. Over the years, [PTD](#) has leveraged Zoyes' expertise in brand development on multiple occasions. In 2017, [Zoyes](#) created a new identity package along with a new [PTD](#) logo and in 2019 they created specialized branding to celebrate our 10-year anniversary.

[PTD](#) designed [Zoyes](#)' new office space in Detroit to include areas for collaboration, heads-down work, entertaining, and a place to showcase their extensive art collection. The unique combination of rich walnut, plywood edges, and black stained oak bring a sophisticated yet relaxed vibe to the space. Custom millwork storage shelves elevate the central studio by providing privacy within the open office and offer a great central meeting area. They also serve as a pin-up space for the team's impromptu critiques and storage for their collection of art and periodicals. With a minimal, modern approach, this new office design is a warm and inviting space that reflects the creativity that is produced by the [Zoyes](#) team.



## INDUSTRY NEWS

The [Michigan Historic Preservation Network \(MHPN\)](#), presented the Tax Credit Award to [The Metropolitan Building](#) this past September.



Each year MHPN presents awards to outstanding projects, people, and organizations that exemplify historic preservation in Michigan. [The Metropolitan Building](#) in downtown Detroit

sat empty and neglected for nearly forty years until the 14-story Neo-Gothic building underwent a 33-million dollar restoration and reopened as the [Element Hotel](#) in December 2018. [PTD](#) is honored to have partnered with Quinn Evans Architects on this historic project. [The Metropolitan Building](#) is home to Detroit's rooftop jewel, [The Monarch Club](#), which was also designed by [PTD](#).

---

Learn more about Patrick Thompson Design



*Copyright © 2020 Patrick Thompson Design, All rights reserved.*

Patrick Thompson Design  
2111 Woodward Ave, Suite 1002  
Detroit, MI 48201

313-800-4005

Would you like to change how you receive these emails?  
You can update your preferences or unsubscribe from this list.